



# GAT MONTHLY MEMBERSHIP PROGRESS REPORT

Results as of: 2/28/2022

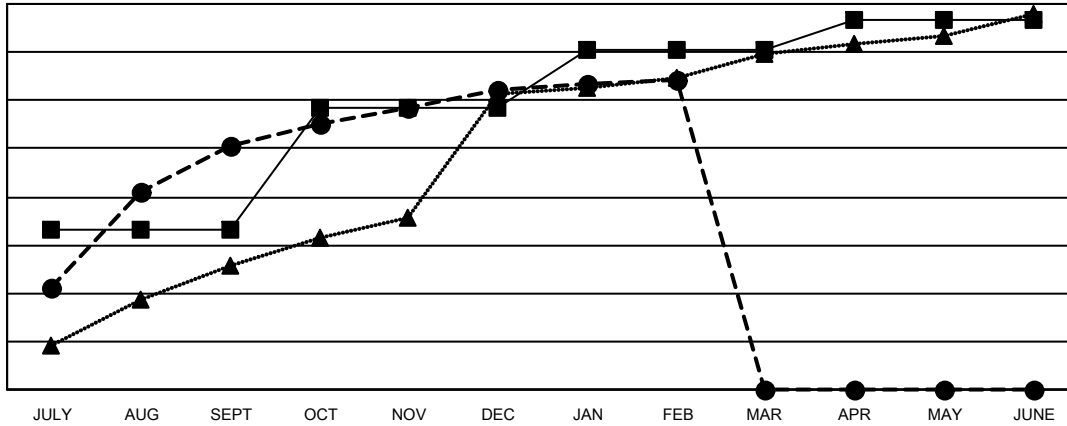
Multiple District 325

LOCATION: NEPAL

Clubs			
RESULTS FOR 2021-2022			
QUARTER	NEW CLUB GOAL	NEW CLUBS	DROPPED CLUBS
JULY/AUG/SEPT	166	252	36
OCT/NOV/DEC	127	59	29
JAN/FEB/MAR	60	10	9
APR/MAY/JUNE	30	0	0

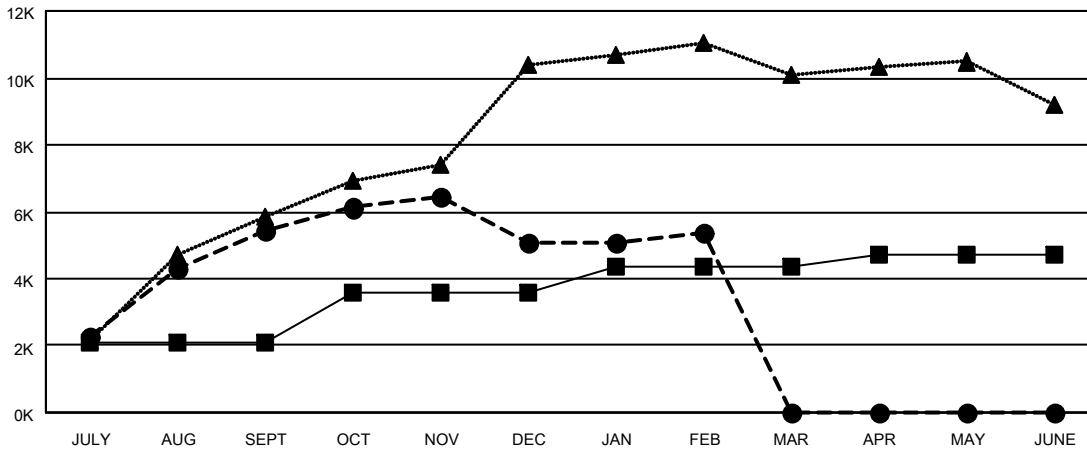
Members			
RESULTS FOR 2021-2022			
QUARTER	MEMBER GROWTH NET GOAL	MEMBER GROWTH ACTUAL	DROPPED MEMBERS ACTUAL (including transfers)
JULY/AUG/SEPT	2087	7,566	2,061
OCT/NOV/DEC	1487	2,318	2,652
JAN/FEB/MAR	800	1,136	733
APR/MAY/JUNE	320	0	0

GOALS AND ACTUAL NEW CLUBS CUMULATIVE



- - CURRENT YEAR GOALS FOR NEW CLUBS
- - CURRENT YEAR ACTUAL NEW CLUBS
- ▲ - LAST YEAR ACTUAL NEW CLUBS

GOALS AND ACTUAL MEMBERS CUMULATIVE



- - MEMBER GROWTH NET GOAL
- - MEMBER GROWTH ACTUAL
- ▲ - LAST YEAR MEMBERSHIP ACTUAL

DROPPED CLUBS: 74	
<b>DROPPED MEMBERS</b>	
DECEASED	35
CLUB CANCELLED	1,572
OTHER	3,839
<b>TOTAL</b>	<b>5,446</b>

994 CLUBS OF 1962 ADDED 1 OR MORE NEW MEMBERS

[CLICK HERE FOR CUMULATIVE MEMBERSHIP DATA](#)

GENDER DISTRIBUTION	
MALE	32,818 (70.94%)
FEMALE	13,441 (29.06%)
NON BINARY	0 (0.00%)
PREFER NOT TO ANSWER	1 (0.00%)
<b>TOTAL FAMILY UNIT MEMBERS</b>	<b>38,532</b>
FAMILY MEMBERS PAYING HALF DUES	26,294